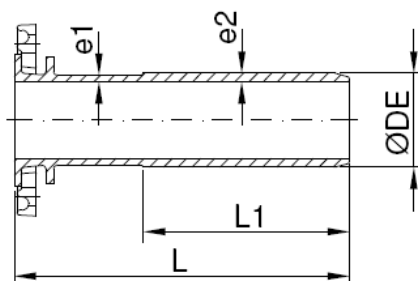


Acessórios Flangeados FFD

Ligador flange/ ponta lisa

FLANGED SPIGOT



DN	DIMENSÕES MM					PESO (KG)		
	DE	L	L1	e1	E2	PN 10	PN 16	PN 25
60	77	345	200	6	7.5	5.9	5.9	6
65	82	345	200	6	7.5	6.4	6.4	6.5
80	98	350	215	6	8	7.7	7.7	8.2
100	118	360	215	6	8	9.4	9.4	10.5
125	144	370	220	6	8	12	12	13.7
150	170	380	225	6	8.2	15.3	15.3	16.9
200	222	400	230	6.3	8.9	22.5	22	24.9
250	274	420	240	6.8	9.8	31.3	31.7	35.2
300	326	440	250	7.2	10.6	41.8	43	46.8
350	378	460	260	7.7	11.5	54.6	56.7	62.7
400	429	480	270	8.1	11.8	66	70.1	77.8
450	480	500	280	8.6	12.2	78.3	84.8	91.5
500	532	520	290	9	13	99.1	112.1	118.4
600	635	560	310	9.9	14.2	135.4	162.7	163.8
700	738	600	330	10.8	15.4	172.5	190	198.5
800	842	600	330	11.7	17.1	223.3	246	253.5

Características:

- Pressão de trabalho PN 10 - PN16 - PN25
- Revestimento interior e exterior com pintura epoxy >250 microns.
- Adequada para águas de consumo humano.
- DN 60 - DN 800.
- Fundição Dúctil GJS-500-7 de acordo com a EN1563.
- Dimensões norma EN545.
- Flange norma EN1092-2.
- Flange móvel.

Design Features:

- PN 10-16-25 operating pressure.
- Inside and outside with coating paint epoxy 250 microns as a minimum.
- Suitable for water human consumption.
- DN 60 - DN 800.
- Ductil Iron GJS-500-7 according to EN1563.
- Dimensions standard EN545.
- Flange standard EN1092-2.
- Movable flanged.

Ensaio:

- Dimensional e hidráulico.

Test:

- Hydraulic and dimensional.