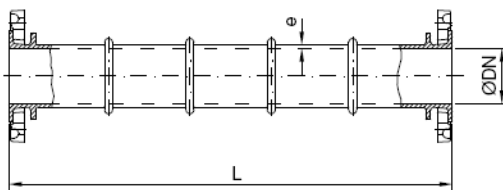


Acessórios Flangeados FFD

Passa-muros

DOUBLE MOVABLE FLANGED PIPE



DN	DIMENSÕES MM		PESO (KG)		
	L	e	PN 10	PN 16	PN 25
50	500	7	9.1	9.1	9.1
60	500	7	10.4	10.4	10.4
65	500	7	11.3	11.3	11.3
80	800	7	17.5	17.5	18.5
100	800	7.2	21.4	21.4	23.6
125	800	7.5	27.6	27.6	30.7
150	800	7.8	34.7	34.7	37.9
200	800	8.4	49.4	48.4	54.2
250	800	9	65.4	66.2	73.2
300	1000	9.6	98.5	100.9	108.5
350	1000	10.2	122.9	127.1	139.1
400	1000	10.8	146.6	154.8	170.2
450	1000	11.4	170.4	183.4	196.8
500	1000	12	199.4	225.4	238
600	1000	13.2	258.8	313.4	315.6
700	1000	14.4	343	378.4	395.5
800	1000	15.6	455	478	485

Características:

- Pressão de trabalho PN 10 - PN16 - PN25
- Revestimento interior e exterior com pintura epoxy >250 microns.
- Adequada para águas de consumo humano.
- DN 50 - DN 800.
- Fundição Dúctil GJS-500-7 de acordo com a EN1563.
- Dimensões norma EN545.
- Flange norma EN1092-2.
- Flange móvel.

Design Features:

- PN 10-16-25 operating pressure.
- Inside and outside with coating paint epoxy 250 microns as a minimum.
- Suitable for water human consumption.
- DN 50 - DN 800.
- Ductil Iron GJS-500-7 according to EN1563.
- Dimensions standard EN545.
- Flange standard EN1092-2.
- Movable flanged.

Ensaio:

- Dimensional e hidráulico.

Test:

- Hydraulic and dimensional.