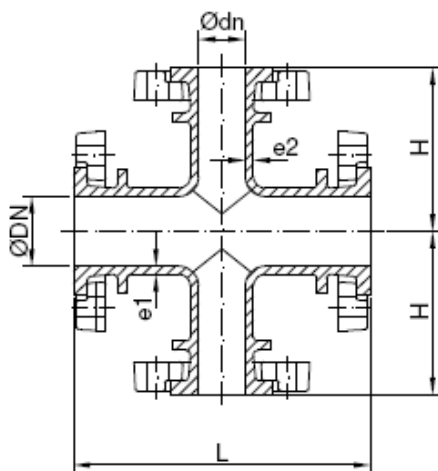


Acessórios Flangeados FFD Cruzeta

MOVABLE FLANGED CROSSHEAD



Características:

- Pressão de trabalho PN 10 - PN16 - PN25
- Revestimento interior e exterior com pintura epoxy >250 microns.
- Adequada para águas de consumo humano.
- DN 60 - DN 300.
- Fundição Dúctil GJS-500-7 de acordo com a EN1563.
- Dimensões norma EN545.
- Flange norma EN1092-2.
- Flange móvel.

Design Features:

- PN 10-16-25 operating pressure.
- Inside and outside with coating paint epoxy 250 microns as a minimum.
- Suitable for water human consumption.
- DN 60 - DN 300.
- Ductil Iron GJS-500-7 according to EN1563.
- Dimensions standard EN545.
- Flange standard EN1092-2.
- Movable flanged.

DN	DIMENSÕES MM						PESO (KG)		
	dn	L	H	e1	e2	PN 10	PN 16	PN 25	
60	60	300	150	7	7	13.1	13.1	13.4	
80	80	330	165	7	7	16.7	16.7	18.2	
100	100	360	180	7.2	7.2	20.9	20.9	24.2	
125	125	400	200	7.5	7.5	28.2	28.2	33	
150	150	440	220	7.8	7.8	37.5	37.5	42.3	
200	200	520	260	8.4	8.4	57.7	56.2	64.9	
250	250	600	300	9	9	83.1	84.3	94.8	
300	300	680	340	9.6	9.6	115.5	119.1	130.5	

Ensaio:

- Dimensional e hidráulico.

Test:

- Hydraulic and dimensional.

