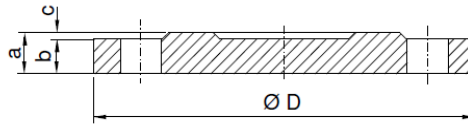


Flange Cega/Roscada

BLIND/THREADED FLANGE



| DN | ROSCA* | PN 10 | | | | PN 16 | | | | | |
|------|--------------|-------|------|------|------|-------|------|------|---|------|---|
| | | D | a | b | c | D | a | b | c | | |
| 40 | de ½" a 1" ½ | 150 | 19 | 16 | 3 | 150 | 19 | 16 | 3 | | |
| 50 | de ½" a 2" | 165 | | | | | | | | | |
| 65 | de ½" a 2" ½ | 185 | | | | | | | | | |
| 80 | de ½" a 3" | 200 | | | | | | | | | |
| 100 | de ½" a 4" | 220 | | | | | | | | | |
| 125 | de ½" a 5" | 250 | | | | | | | | | |
| 150 | de ½" a 6" | 285 | | | | | | | | | |
| 200 | de ½" a 8" | 340 | 20 | 17 | 4 | 340 | 20 | 17 | 4 | | |
| 250 | de ½" a 10" | 400 | 22 | 19 | | 400 | 22 | 19 | | | |
| 300 | de ½" a 12" | 455 | 24.5 | 20.5 | | 455 | 24.5 | 20.5 | | | |
| 350 | de ½" a 14" | 505 | | | | 520 | 26.5 | 22.5 | | | |
| 400 | de ½" a 16" | 565 | | | | 580 | 28 | 24 | | | |
| 450 | de ½" a 18" | 615 | 25.5 | 21.5 | | 5 | 640 | 30 | | 26 | 5 |
| 500 | de ½" a 20" | 670 | 26.5 | 22.5 | | | 715 | 31.5 | | 27.5 | |
| 600 | de ½" a 24" | 780 | 30 | 25 | 840 | | 36 | 31 | | | |
| 700 | de ½" a 28" | 895 | 32.5 | 27.5 | 5 | 910 | 39.5 | 34.5 | 5 | | |
| 800 | de ½" a 32" | 1015 | 35 | 30 | | 1025 | 43 | 38 | | | |
| 900 | de ½" a 36" | 1115 | 37.5 | 32.5 | | 1125 | 46.5 | 41.5 | | | |
| 1000 | de ½" a 40" | 1230 | 40 | 35 | 1255 | 50 | 45 | | | | |

Características:

- Pressão de trabalho
PN 10 – PN 16.
- Revestimento com pintura epoxy >250 microns.
- Adequada para águas de consumo humano.
- DN 40 – DN 1000.
- Fundição Dúctil GJS-500-7 de acordo com a EN1563.
- Dimensões norma EN545.
- Flange norma EN1092-2.

Design Features:

- PN 10-16 operating pressure.
- Coating paint epoxy 250 microns as a minimum.
- Suitable for water human consumption.
- DN 40 – DN 1000.
- Ductil Iron GJS-500-7 according to EN1563.
- Dimensions standard EN545.
- Flange standard EN1092-2.

Ensaio:

- Dimensional.

Test:

- Dimensional

