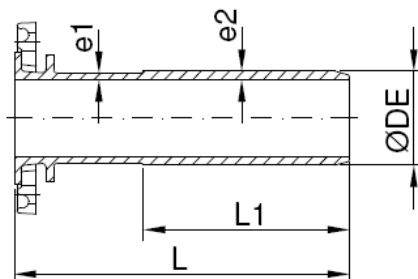
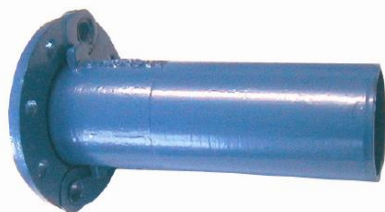


# Acessórios Flangeados FFD

## Ligador flange/ ponta lisa

### FLANGED SPIGOT



#### Características:

- Pressão de trabalho  
PN 10 - PN16 – PN25
- Pintura epoxy > 250microns.
- Adequada para águas de consumo humano.
- DN 60-800.
- Fundição Dúctil GJS-500-7 de acordo com a EN1563.

#### Design Features:

- PN 10-16-25 operating pressure.
- Coating paint epoxy 250 microns as a minimum.
- Suitable for water human consumption.
- DN 60-800.
- Ductil Iron GJS-500-7 according to EN1563.

DN	DIMENSÕES MM					PESO (KG)		
	DE	L	L1	e1	E2	PN 10	PN 16	PN 25
60	77	345	200	6	7.5	5.9	5.9	6
65	82	345	200	6	7.5	6.4	6.4	6.5
80	98	350	215	6	8	7.7	7.7	8.2
100	118	360	215	6	8	9.4	9.4	10.5
125	144	370	220	6	8	12	12	13.7
150	170	380	225	6	8.2	15.3	15.3	16.9
200	222	400	230	6.3	8.9	22.5	22	24.9
250	274	420	240	6.8	9.8	31.3	31.7	35.2
300	326	440	250	7.2	10.6	41.8	43	46.8
350	378	460	260	7.7	11.5	54.6	56.7	62.7
400	429	480	270	8.1	11.8	66	70.1	77.8
450	480	500	280	8.6	12.2	78.3	84.8	91.5
500	532	520	290	9	13	99.1	112.1	118.4
600	635	560	310	9.9	14.2	135.4	162.7	163.8
700	738	600	330	10.8	15.4	172.5	190	198.5
800	842	600	330	11.7	17.1	223.3	246	253.5

#### Ensaio:

- De acordo com EN545.

#### Test:

- According to EN545.