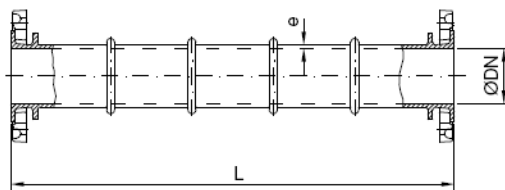
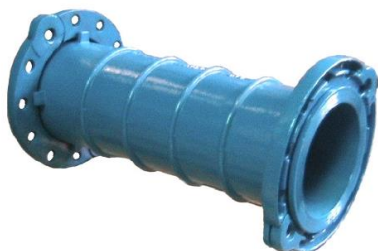


Acessórios Flangeados FFD

Passa-muros

DOUBLE MOVABLE FLANGED PIPE



Características:

- Pressão de trabalho
PN 10 - PN16 – PN25
- Pintura epoxy > 250microns.
- Adequada para águas de consumo humano.
- DN 50-800.
- Fundição Dúctil GJS-500-7 de acordo com a EN1563.

Design Features:

- PN 10-16-25 operating pressure.
- Coating paint epoxy 250 microns as a minimum.
- Suitable for water human consumption.
- DN 50-800.
- Ductil Iron GJS-500-7 according to EN1563.

DN	DIMENSÕES MM		PESO (KG)		
	L	e	PN 10	PN 16	PN 25
50	500	7	9.1	9.1	9.1
60	500	7	10.4	10.4	10.4
65	500	7	11.3	11.3	11.3
80	800	7	17.5	17.5	18.5
100	800	7.2	21.4	21.4	23.6
125	800	7.5	27.6	27.6	30.7
150	800	7.8	34.7	34.7	37.9
200	800	8.4	49.4	48.4	54.2
250	800	9	65.4	66.2	73.2
300	1000	9.6	98.5	100.9	108.5
350	1000	10.2	122.9	127.1	139.1
400	1000	10.8	146.6	154.8	170.2
450	1000	11.4	170.4	183.4	196.8
500	1000	12	199.4	225.4	238
600	1000	13.2	258.8	313.4	315.6
700	1000	14.4	343	378.4	395.5
800	1000	15.6	455	478	485

Ensaio:

- De acordo com EN545.

Test:

- According to EN545.