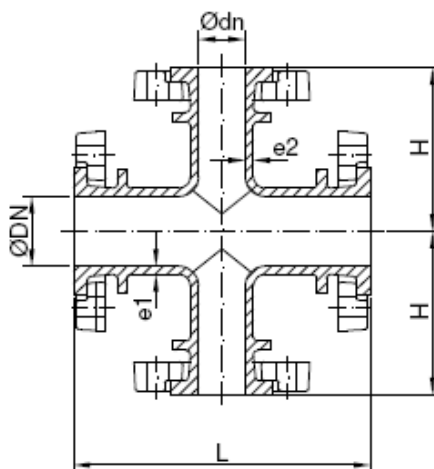


# Acessórios Flangeados FFD

## Cruzeta

### MOVABLE FLANGED CROSSHEAD



#### Características:

- Pressão de trabalho PN 10 - PN16 – PN25
- Pintura epoxy > 250microns.
- Adequada para águas de consumo humano.
- DN 60-300.
- Fundição Dúctil GJS-500-7 de acordo com a EN1563.

#### Design Features:

- PN 10-16-25 operating pressure.
- Coating paint epoxy 250 microns as a minimum.
- Suitable for water human consumption.
- DN 60-300.
- Ductil Iron GJS-500-7 according to EN1563.

DN	DIMENSÕES MM					PESO (KG)		
	dn	L	H	e1	e2	PN 10	PN 16	PN 25
60	60	300	150	7	7	13.1	13.1	13.4
80	80	330	165	7	7	16.7	16.7	18.2
100	100	360	180	7.2	7.2	20.9	20.9	24.2
125	125	400	200	7.5	7.5	28.2	28.2	33
150	150	440	220	7.8	7.8	37.5	37.5	42.3
200	200	520	260	8.4	8.4	57.7	56.2	64.9
250	250	600	300	9	9	83.1	84.3	94.8
300	300	680	340	9.6	9.6	115.5	119.1	130.5

#### Ensaio:

- De acordo com EN545.

#### Test:

- According to EN545.